

## **Mitsubishi Electric enables new business models using digital twin and IoT**

Ratingen, Germany, 19<sup>th</sup> September 2019

**An effective IoT enabled software platform is essential for production companies to coordinate and manage digital transformation. The solution ‘Elements for IoT’ from CONTACT Software, a new member of Mitsubishi Electric’s e-F@ctory Alliance offers just that. Data transparency for individual machines and devices across multiple locations allows for efficient planning, management and predictive maintenance.**

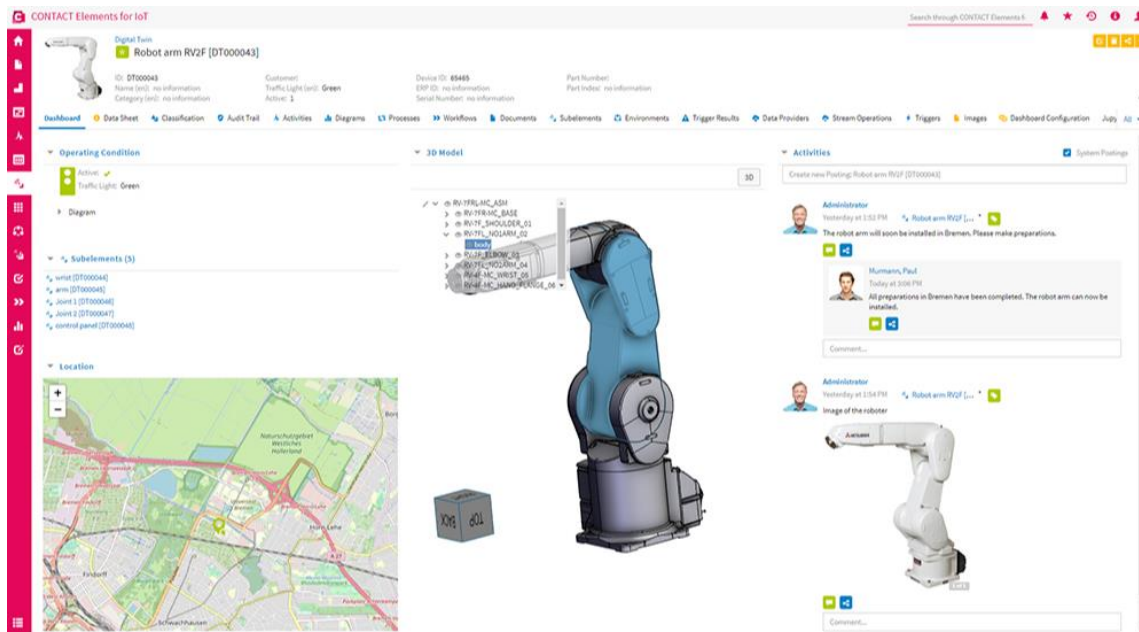
Digitalisation of manufacturing, using tools such as CONTACT Elements for IoT, offers improved ROI for automation investment by increasing production uptime using predictive maintenance. It also creates an opportunity for new business models, such as machine as a service and service contracts based on predictive maintenance, which are driven by live information and intelligent systems.

Using Elements for IoT software, the complete lifecycle of machinery can be managed from a single reference point. Starting with CAD files of the equipment, a virtual operational model is built-up, and then connected to a physical production site.

Live data from machine tools, robots, PLCs and other Smart devices is used to create a digital twin. The twin is then used to achieve

maintenance on-demand, it can reliably predict service requirements, improving operational efficiency and reducing downtime. Parameterising connections to the machines makes it easier to transfer useful live information without additional programming, making full use of the improved data transparency.

CONTACT Software joining the e-F@ctory Alliance adds another strong partner to the IT / OT solutions portfolio of Mitsubishi Electric, which already includes industry leaders such as SAP.



**Image 1:** CONTACT Software joining the e-F@ctory Alliance of Mitsubishi Electric creates an opportunity for new business models.

[Source: Mitsubishi Electric Europe B.V. & CONTACT Software]

The image(s) distributed with this press release are for editorial use only and are subject to copyright. The image(s) may only be used to accompany the press release mentioned here, no other use is permitted

## **About Mitsubishi Electric**

With nearly 100 years of experience in providing reliable, high-quality products, Mitsubishi Electric Corporation is a recognized world leader in the manufacture, marketing and sales of electrical and electronic equipment used in information processing and communications, space development and satellite communications, consumer electronics, industrial technology, energy, mobility and building technology, as well as heating, cooling and air-conditioning technology.

Embracing the spirit of its corporate statement, Changes for the Better, and its environmental statement, Eco Changes, Mitsubishi Electric endeavours to be a global, leading green company, enriching society with technology.

With around 145,800 employees the company recorded consolidated group sales of 40.7 billion US Dollar\* in the fiscal year ended March 31, 2019.

Our sales offices, research & development centres and manufacturing plants are located in over 30 countries.

## **Factory Automation EMEA**

Mitsubishi Electric Europe B.V., Factory Automation EMEA has its European headquarters in Ratingen near Dusseldorf, Germany. It is a part of Mitsubishi Electric Europe B.V. that has been represented in Germany since 1978, a wholly owned subsidiary of Mitsubishi Electric Corporation, Japan.

The role of Factory Automation EMEA is to manage sales, service and support across its network of local branches and distributors throughout the EMEA region.

*\* At an exchange rate of 111 yen to the US dollar, the rate given by the Tokyo Foreign Exchange Market on March 31, 2019*

**Further Information:**

[eu3a.mitsubishielectric.com/fa](http://eu3a.mitsubishielectric.com/fa)

**Follow us on:**



[youtube.com/user/MitsubishiFAEU](https://youtube.com/user/MitsubishiFAEU)



[twitter.com/MitsubishiFAEU](https://twitter.com/MitsubishiFAEU)



[www.linkedin.com/Mitsubishi Electric - Factory Automation EMEA.](https://www.linkedin.com/Mitsubishi Electric - Factory Automation EMEA)

**Press contact:**

**Mitsubishi Electric Europe B.V.**

Factory Automation EMEA

**Monika Torkel**

Media Relations

Mitsubishi-Electric-Platz 1

40882 Ratingen, Germany

Tel: +49 (0)2102 486-2150

[Mob: +49 \(0\)172 261 4824](tel:+49(0)1722614824)

[Monika.Torkel@meg.mee.com](mailto:Monika.Torkel@meg.mee.com)

[de.linkedin.com/in/Monika-Torkel](https://de.linkedin.com/in/Monika-Torkel)

[www.xing.com/Monika\\_Torkel](http://www.xing.com/Monika_Torkel)

**PR agency:**

**DMA Europa Ltd.**

**Philip Howe**

Europa Building, Arthur Drive, Hoo Farm Industrial Estate, Kidderminster, Worcestershire, UK

Tel.: +44 (0)1562 751436

[philip@dmaeuropa.com](mailto:philip@dmaeuropa.com)

[www.dmaeuropa.com](http://www.dmaeuropa.com)